



Manor Road, Reigate
£2,500,000





“ This superb home combines the charm of an established property with the benefits of modern design. With its sought-after location, generous proportions, and beautifully maintained south-facing garden, this is an exceptional opportunity to secure a long-term family home in Reigate. ”



Set behind a private gated driveway, this attractive detached home welcomes you with a sense of space and privacy. Built in 1993 by Berkeley Homes, well known for their executive style properties, the same family have had the privilege of owning the property since it was built.

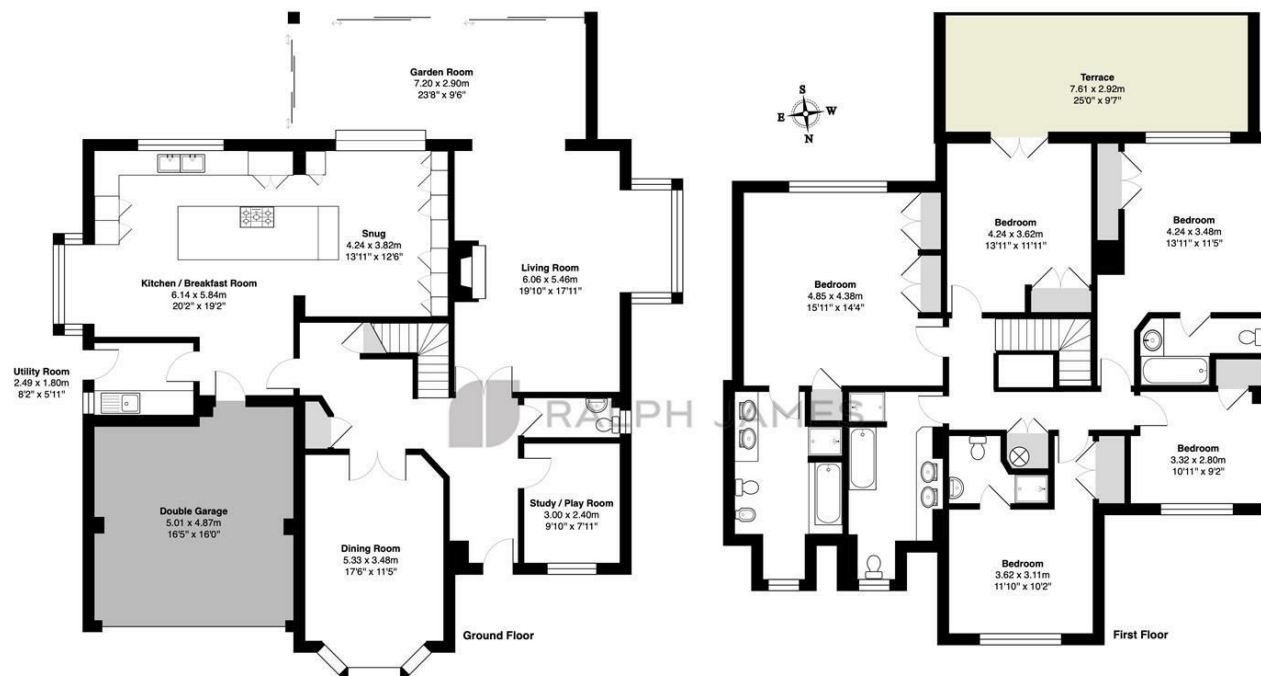
Inside, the layout is both versatile and well-proportioned, ideal for growing families. The kitchen has been tastefully updated in recent years, combining modern fittings with practical design, making it the heart of the home. The contemporary style, garden room extension creates a stunning focal point, seamlessly connecting indoor and outdoor living. Floor-to-ceiling, corner sliding glass doors open right out, directly onto the large south facing garden, really giving a sense of bringing the inside out.

On the ground floor, multiple reception rooms, including a generous living room, a separate dining room and a ground floor home office, provide flexible spaces for family life as well as entertaining. Upstairs, five double bedrooms with built in wardrobes, alongside three en suite's and a family bathroom, offer further flexibility. There is access from one of the bedrooms to a bespoke terrace with sleek glass balustrade, providing uninterrupted views across the garden.

Outside the garden is spectacular. South facing, it is a real sun trap and has been beautifully maintained. There is a variety of mature fruit trees and a large level lawn as well as an expansive terrace providing the perfect setting for outdoor dining. To the front there is ample parking for several cars on the driveway and a double garage as well.

Need to know

- Attractive five bedroom detached home, built in 1993
- Expansive south-facing garden, perfect for entertaining, play and relaxation
- Striking modern garden room extension with low-profile, full-height sliding corner doors — creating seamless indoor-outdoor living
- Stylishly updated kitchen, designed as the heart of the home for cooking, gathering and connection
- Versatile reception rooms, offering flexible spaces for family life, work or entertaining
- Prime location, just a short walk to Reigate station and town centre, combining commuter convenience with a vibrant local lifestyle
- Close to highly regarded schools including Micklefield, Holmesdale Infants, Reigate Priory, Reigate St Marys & Reigate Grammar
- Secure gated driveway and integral double garage, providing both privacy and peace of mind



Manor Road, Reigate
Total Area: 311.4 m² ... 3352 ft² (excluding terrace)
FOR ILLUSTRATIVE PURPOSES ONLY.

Whilst every attempt has been made to ensure the accuracy of the floor plan shown, all measurements, positioning, fixtures, features, fittings and any other data shown are an approximate interpretation for illustrative purposes only and are not to scale.

No responsibility is taken for any error, omission, mis-statement or use of data shown.

The above statement applies to both 'Still Moving London LTD' and the Company or individual displaying this floor plan.

Unauthorised reproduction prohibited.

© Still Moving London LTD (www.stillmovinglondon)

RALPH JAMES

Interested?

reigate@ralphjames.co.uk
01737 333677

ralphjames.co.uk